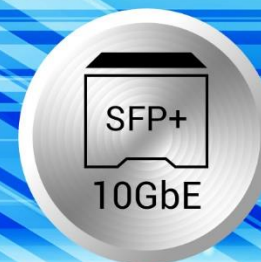


QNAP

QSW-M1208 series

Entry-level 10GbE Layer 2 Web Managed Switch
for rapid network deployment



QSW-M1204-4C



QSW-M804-4C



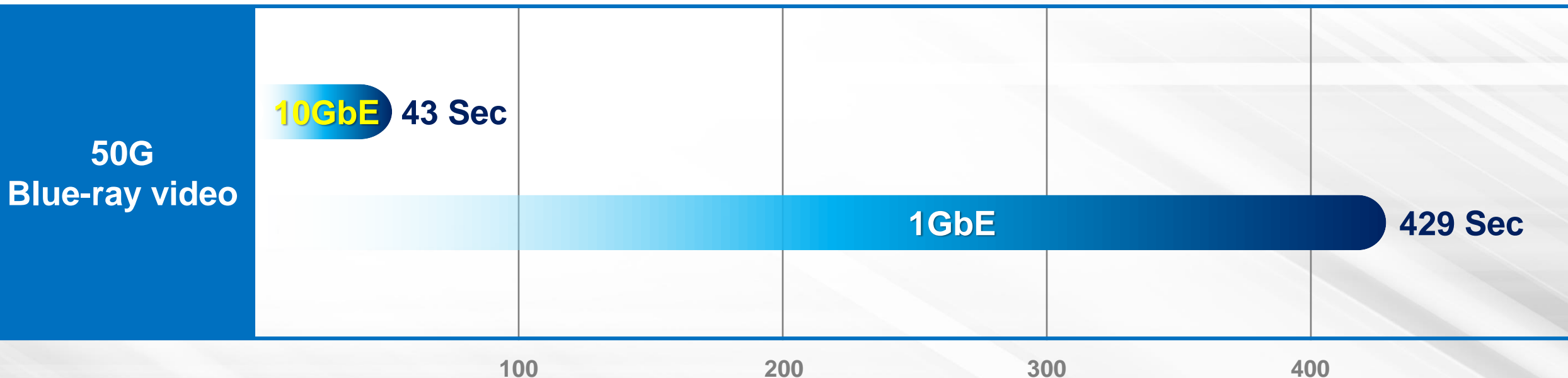
QSW-M1208-8C

Why do we need 10GbE?



- Network speed is everything in the audiovisual domain.
- Without network speed, high performance hardware is useless.

Transferring Time



QNAP 10GbE unmanaged switches are already on the market



QSW-1208-8C

Up to **12 port 10GbE**



QSW-804-4C

Up to **8 port 10GbE**



We're making it better...



What we can do after having 10GbE unmanaged switches?

Only can check cable one by one when issue happen? What else?

Whole office shut down with one single PC affected by virus?

I like to have more then 10Gbps!



We heard what customers need!



Hardware highlights



QSW-M1204-4C



QSW-M804-4C



QSW-M1208-8C

QSW-M12XX series HW spec



QSW-M1208-8C



QSW-M1204-4C



QSW-M804-4C



Number of Port	12	12	8
10GbE SFP+	4	8	4
10GbE SFP+/RJ45 combo	8	4	4
Switching capacity	240 Gbps	240 Gbps	160 Gbps

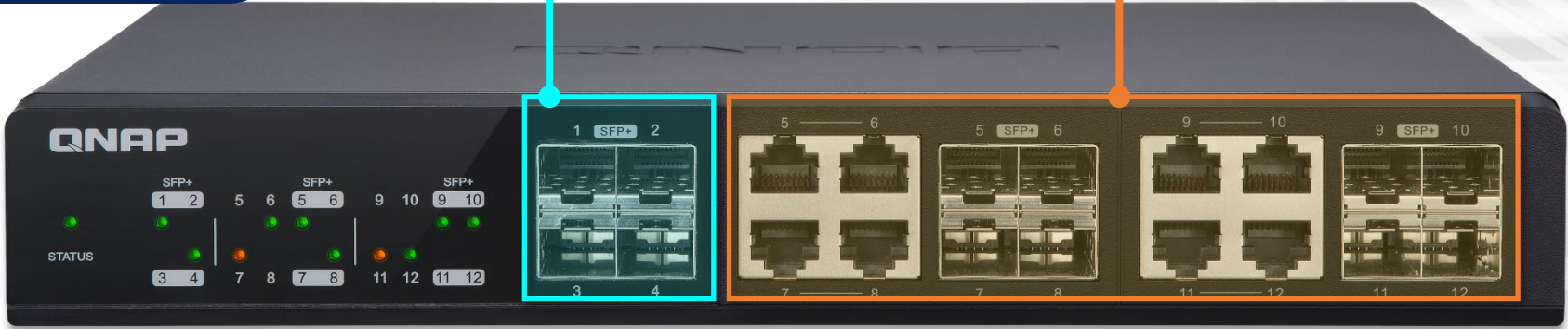
Device Mylar



QSW-M1208-8C

4 * SFP+ port

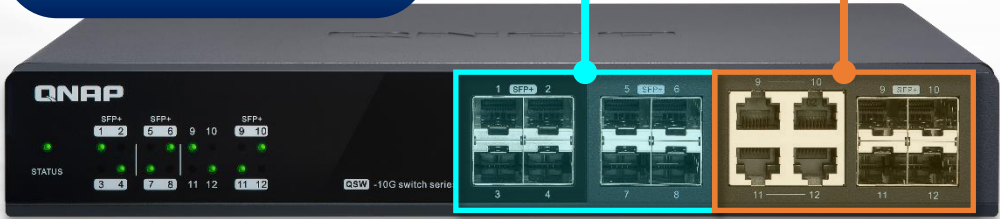
8 * SFP+/RJ45 Combo port



QSW-M1204-4C

8* SFP+ port

4* SFP+/RJ45
Combo port



QSW-M804-4C

4*SFP+ port

4*SFP+/RJ45
Combo port



Intuitive identification of LED indicators



Status indicator

- Green : System is ready for use.
- Orange : System warning, e.g. high temperature or fan error.

Standalone network indicator LED

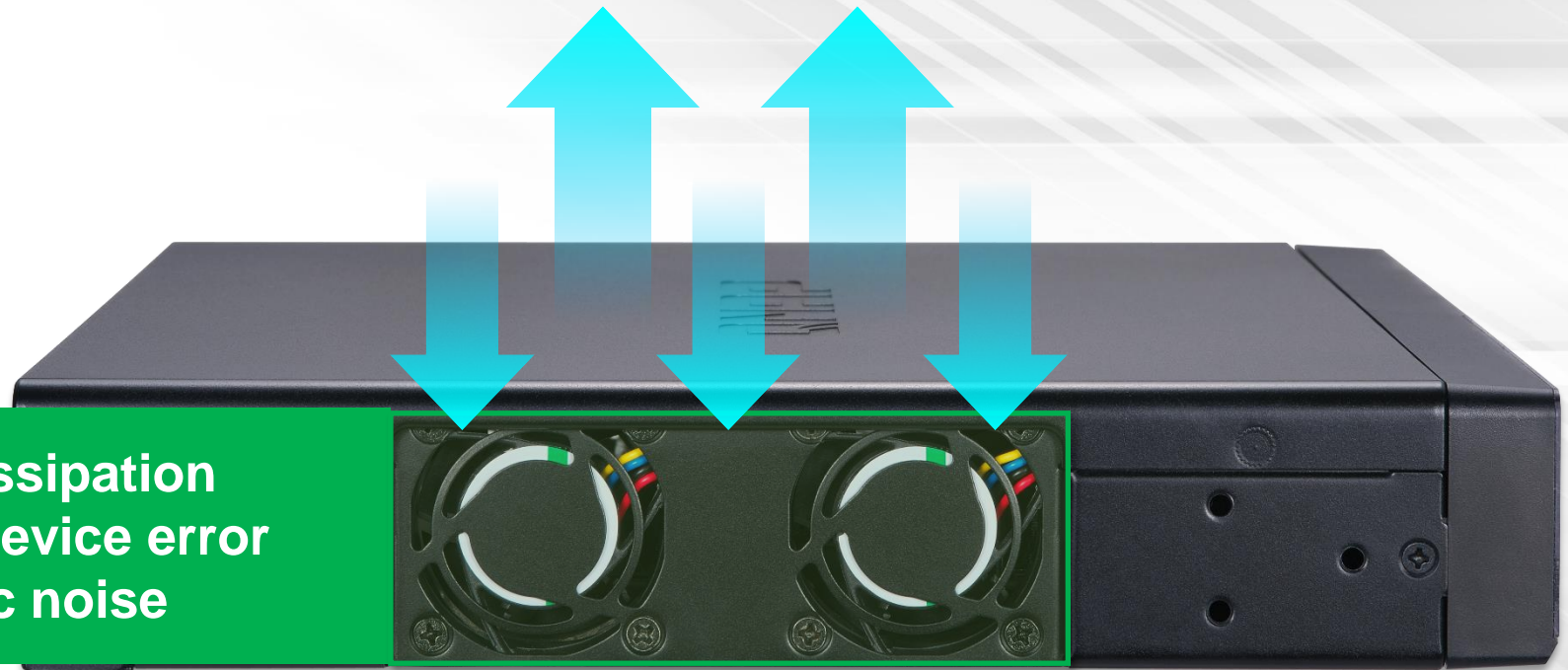
- Green : Link is up and operates at 10 Gbps.
- Amber : Link is up and operates at 1 Gbps.



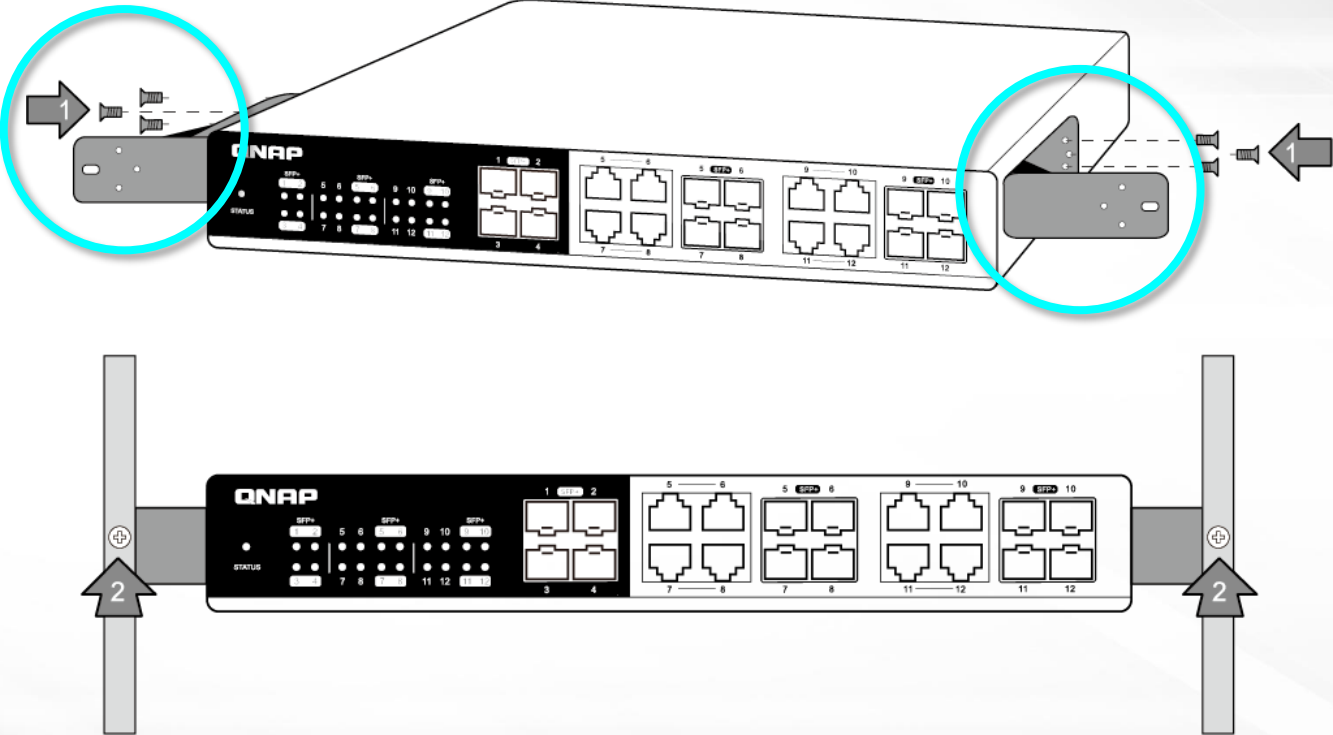
Dual fans



- Improve heat dissipation
- Deduce single device error
- Deduce acoustic noise



Rackmount brackets



Flexible network speed



- Fully support 10GbE SFP+ or SFP+/ NBASE-T, compatible with fiber and copper.
- 5GbE device can connect directly without pain.



QNAP

QSwitch Production Insight



QSW-M1204-4C



QSW-M804-4C



QSW-M1208-8C

Three Stages of Production



1

Hardware &
Software
Development

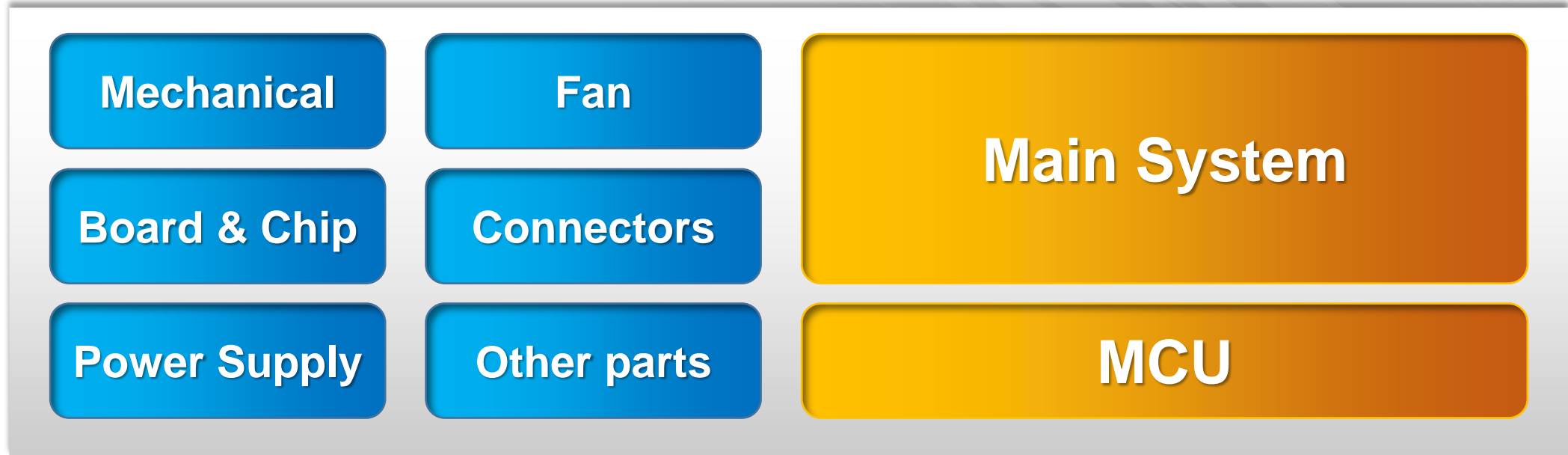
2

Verification

3

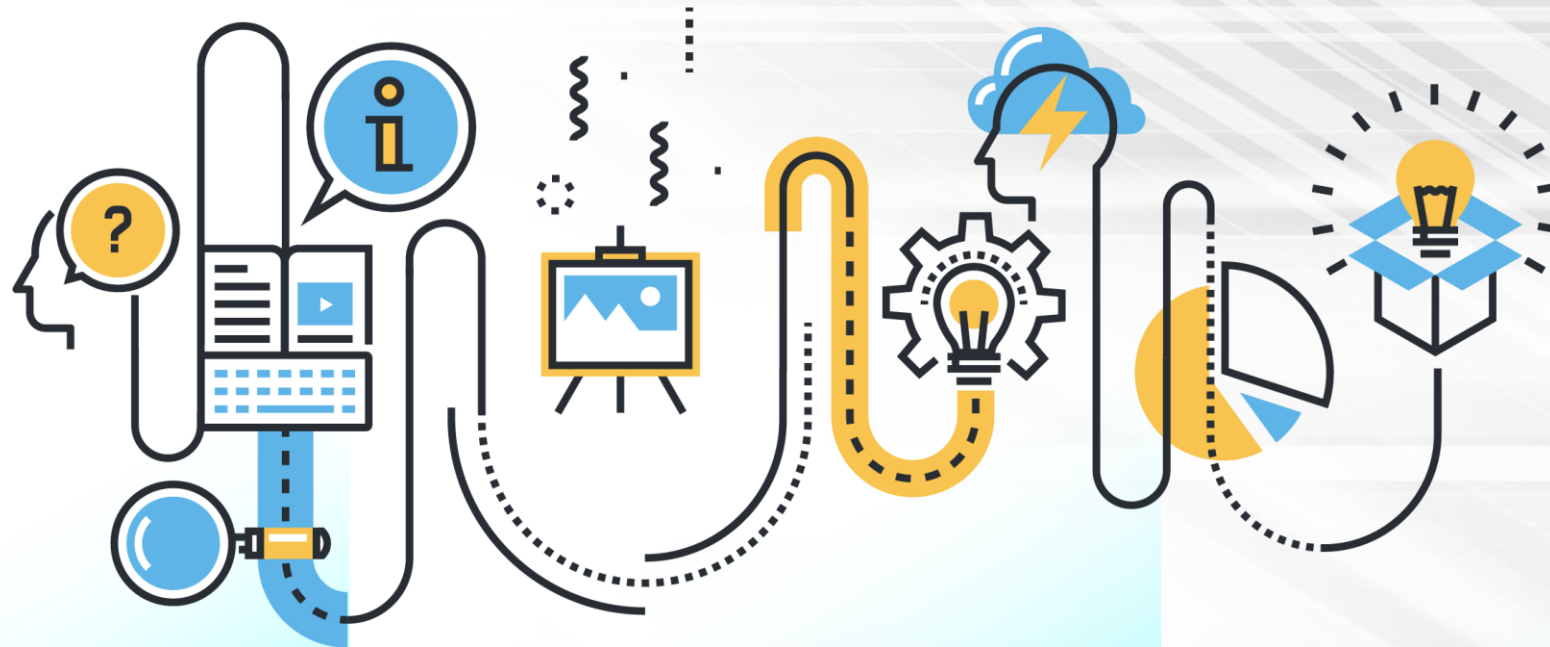
Production

Hardware & Software Development



Design Verification

Design Verification



1

Reliability Test

2

**Functionality /
Performance
Test**

3

**Interoperability
Test**

Reliability Test



- **Burn-in test:** Up to 20 devices burn-in test for more than 1 month.
- **Hardware verification:** Vibration test and shock test.
- **AC power on/off test:** Up to 1000 times.
- **Acoustic noise test:** Test the acoustic noise for different fan speeds.
- **Thermal measurement:** Set the temperature to 0°C, 25°C, 35°C, 45°C and 55°C.



Thermal Measurement

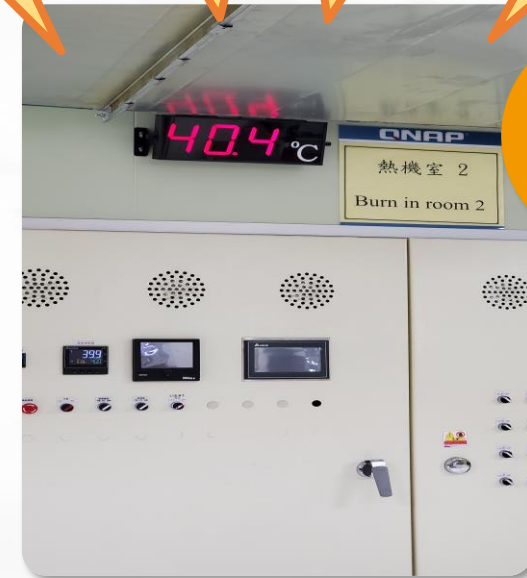
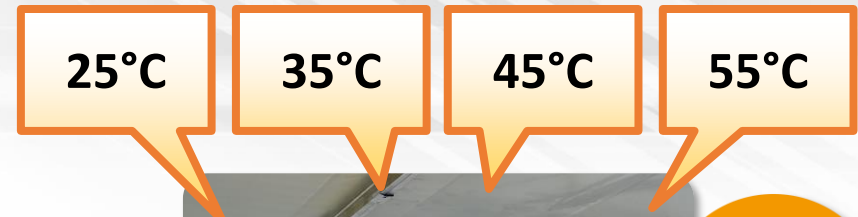
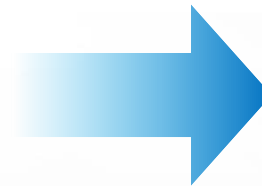


Network performance test by different temperature environments.

Pass criteria: 0 frame drop.



Thermal test equipment and device



Thermal monitor

Hardware Verification



Vibration test: Use the random vibration mode to determine the device.



Shock test: Ensure that material can withstand the relatively infrequent, non-repetitive shocks or transient vibration encountered in handling, transportation and service environments.



Functionality / Performance Test



1

**Network
functionality
measurement**

2

**Real production
test**

3

Simulation test

Network Test Equipements



3 high-performance test solutions



Nustreams-2000i



Spirent



XENA

Benchmarking of QSwitch



Benchmarking Methodology :

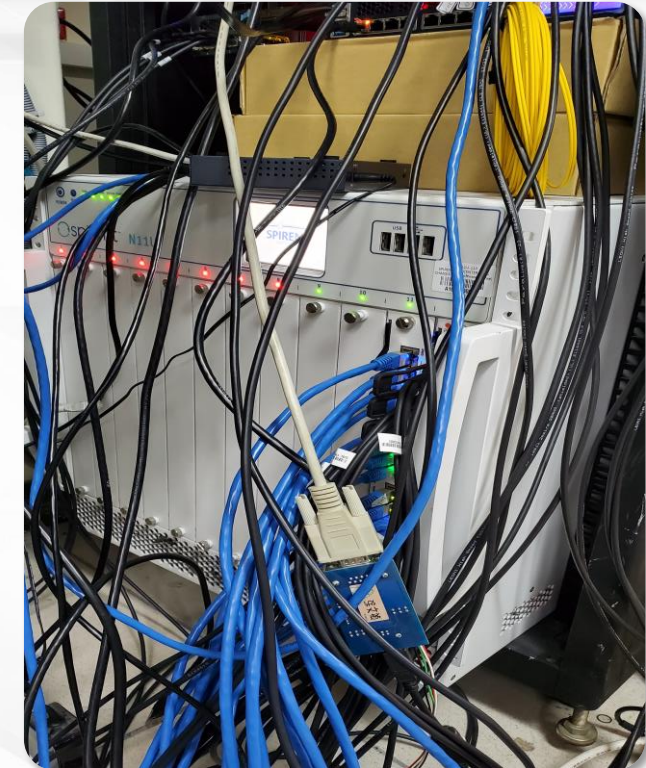
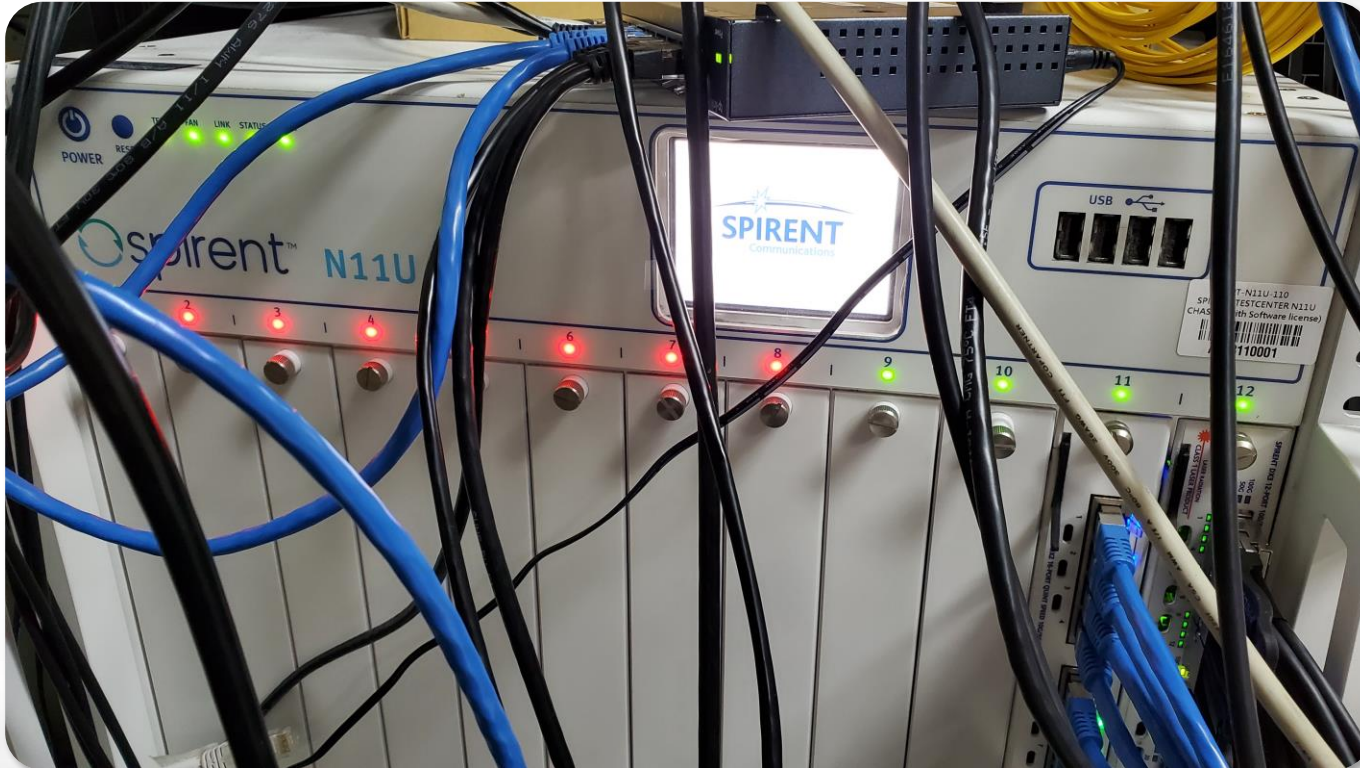
- RFC 2544 measures the performance characteristics of a network interconnecting devices, such as throughput, frame loss, latency, back-to-back or burst, and so on.
- RFC 2889 LAN switch benchmarking methodology: Test for forwarding rate, congestion control, address learning and packet filtering capabilities.
- Long-term stressful test: Full loading the QSwitch under 45°C environment for over 1 month to test the Switch reliability.



Function verification - Simulator testing



Using Spirent simulated real traffic, verified device availability.



User Scenario verification- QNAP server room deployed



QNAP IT server room



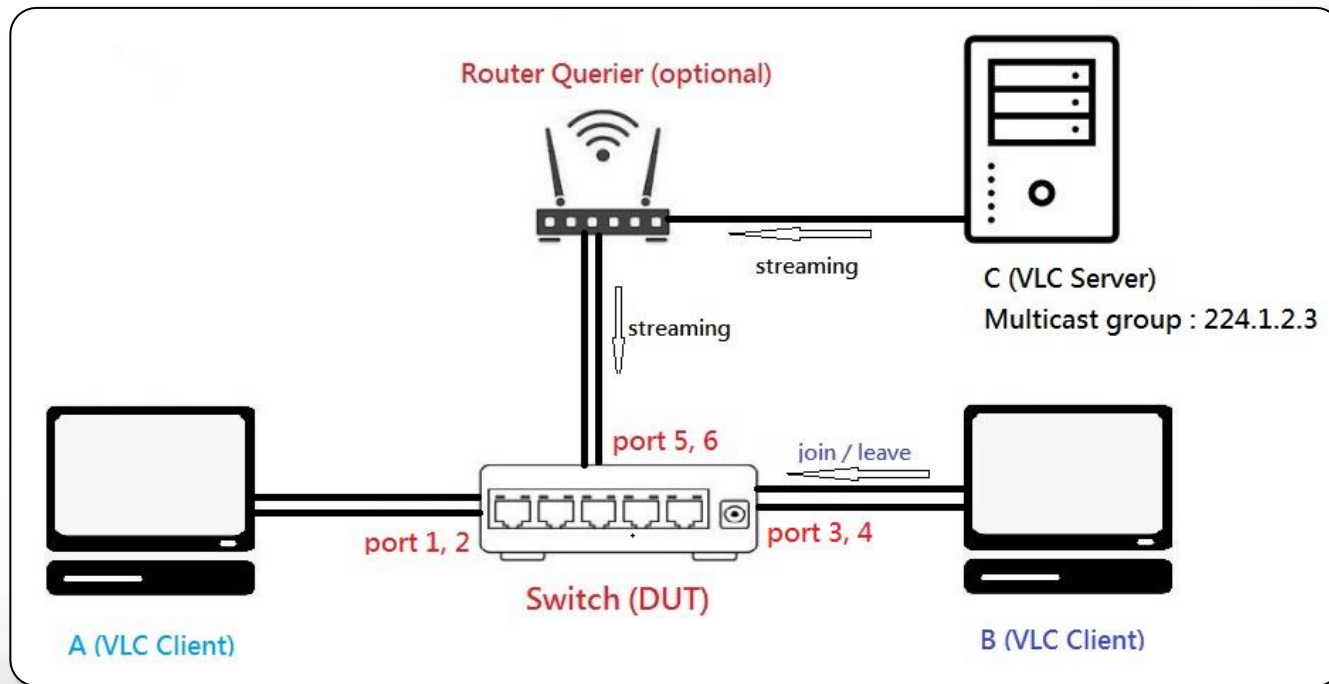
QNAP Hsinchu main server room



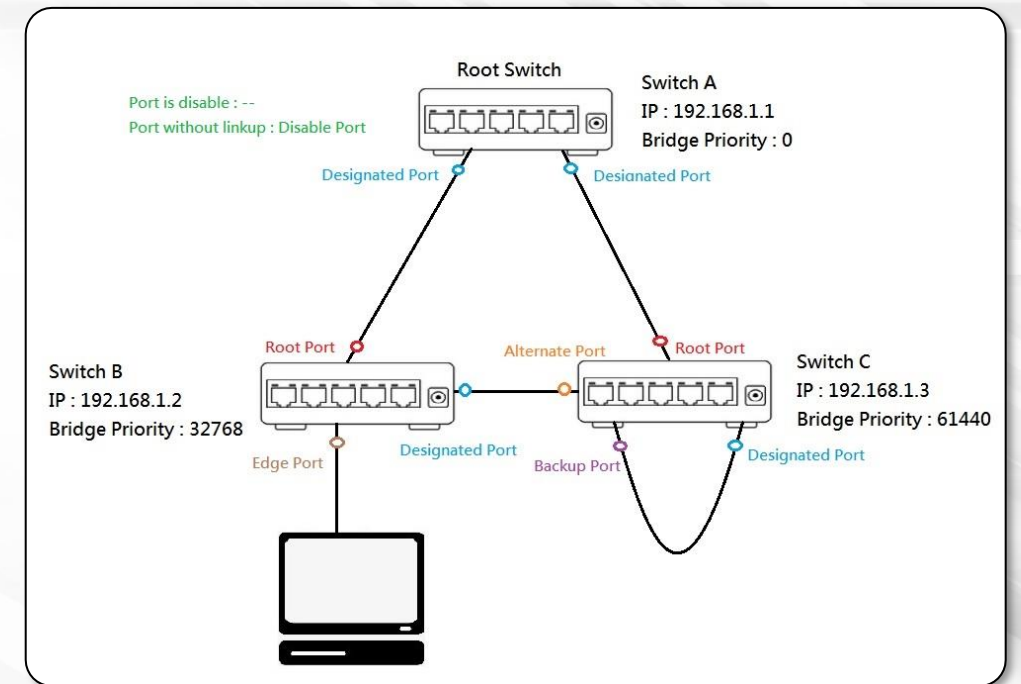
Protocol verification-QNAP internal testing



IGMP field trial topology – Cowork with QNAP NAS



RSTP field trial topology



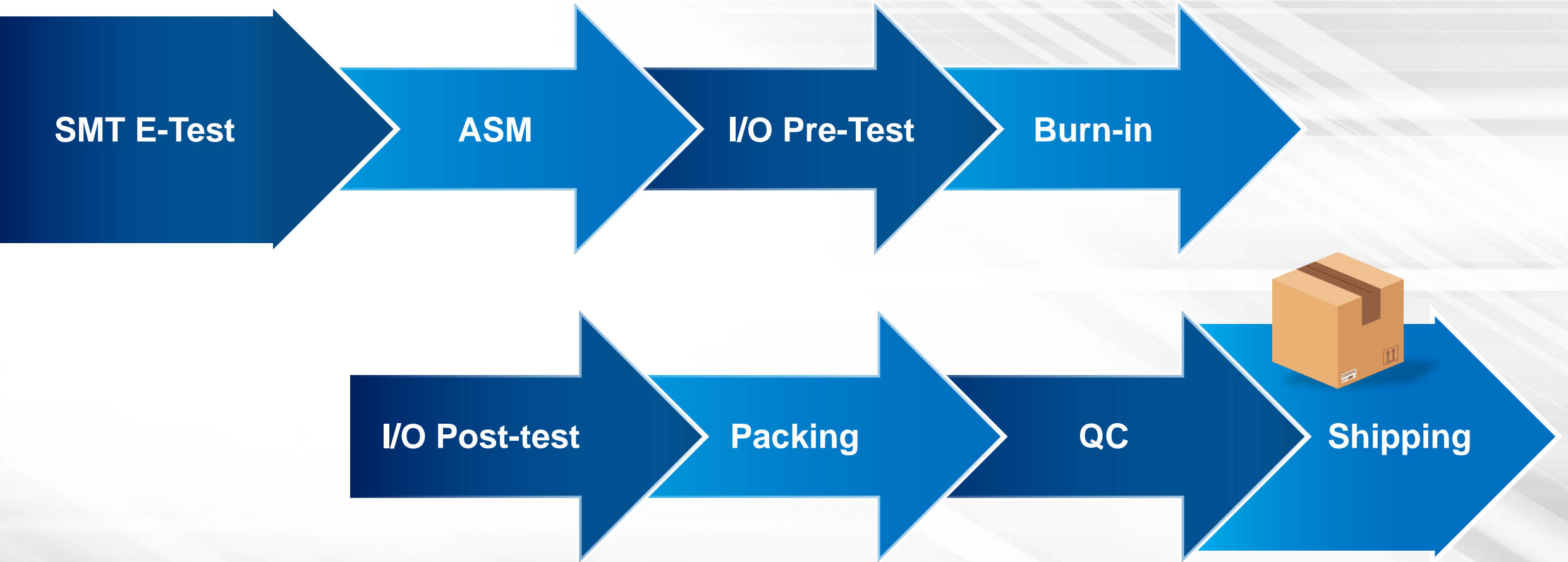
Interoperability test



- **International certificate: FCC, CE, BSMI, CCC etc.**
- **Compatibility: Tests between QNAP NAS and 10G network adapters and mainstream fiber transceiver modules.**



Manufacturing Process

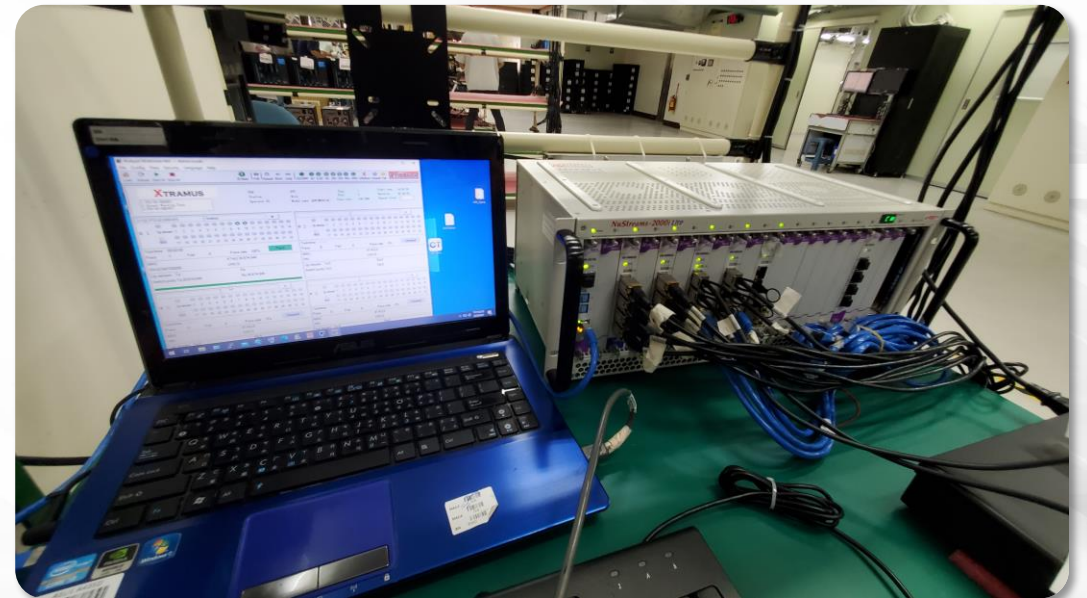
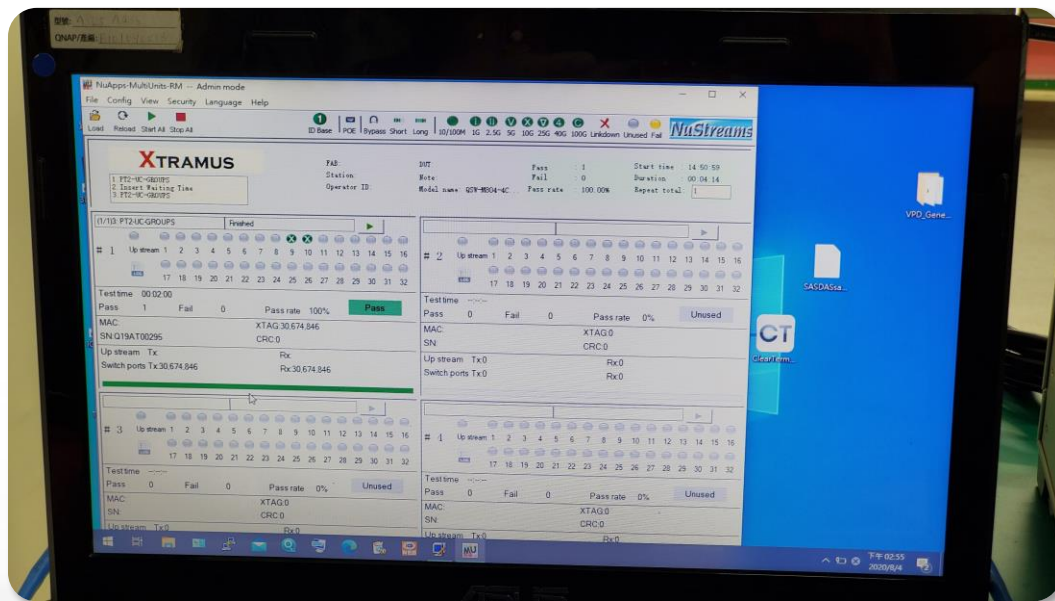


I/O Test



All the ports on the QSwitch are checked by the test gig.

0% of packet loss is accepted!



Burn-in Test



48-hour burn-in test



系列號	IP位址	版本	種類	組別	MAC位址	狀態	開始時間	結束時間	持續時間	數據量
Q18841026	223.223.0.11	4.4.1.1072 (20180908)	TPS-1082	1	24	24	2020-08-04 12:21:19	2020-08-04 12:21:19	0:00:00	0
Q18841062	223.223.0.210	4.4.1.1072 (20180908)	TPS-1082	1	24	24	2020-08-04 12:21:19	2020-08-04 12:21:19	0:00:00	0
Q18841087	223.223.11.90	4.4.1.1072 (20180908)	TPS-1082	1	24	24	2020-08-04 12:21:19	2020-08-04 12:21:19	0:00:00	0
Q18841088	223.223.0.78	4.4.1.1072 (20180908)	TPS-1082	1	24	24	2020-08-04 12:21:19	2020-08-04 12:21:19	0:00:00	0
Q18841089	223.223.0.51	4.4.1.1072 (20180908)	TPS-1082	1	24	24	2020-08-04 12:21:19	2020-08-04 12:21:19	0:00:00	0
Q18841090	223.223.0.72	4.4.1.1072 (20180908)	TPS-1082	1	24	24	2020-08-04 12:21:19	2020-08-04 12:21:19	0:00:00	0
Q18841091	223.223.0.228	4.4.1.1072 (20180908)	TPS-1082	1	24	24	2020-08-04 12:21:19	2020-08-04 12:21:19	0:00:00	0
Q18841092	223.223.0.2	4.4.1.1072 (20180908)	TPS-1082	1	24	24	2020-08-04 12:21:19	2020-08-04 12:21:19	0:00:00	0
Q18841093	223.223.0.82	4.4.1.1072 (20180908)	TPS-1082	1	24	24	2020-08-04 12:21:19	2020-08-04 12:21:19	0:00:00	0
Q18841094	223.223.0.1	4.4.1.1072 (20180908)	TPS-1082	1	24	24	2020-08-04 12:21:19	2020-08-04 12:21:19	0:00:00	0

Packing and Quality Control



Dedicated packing and quality check





Software highlights



QSW-M1204-4C



QSW-M804-4C

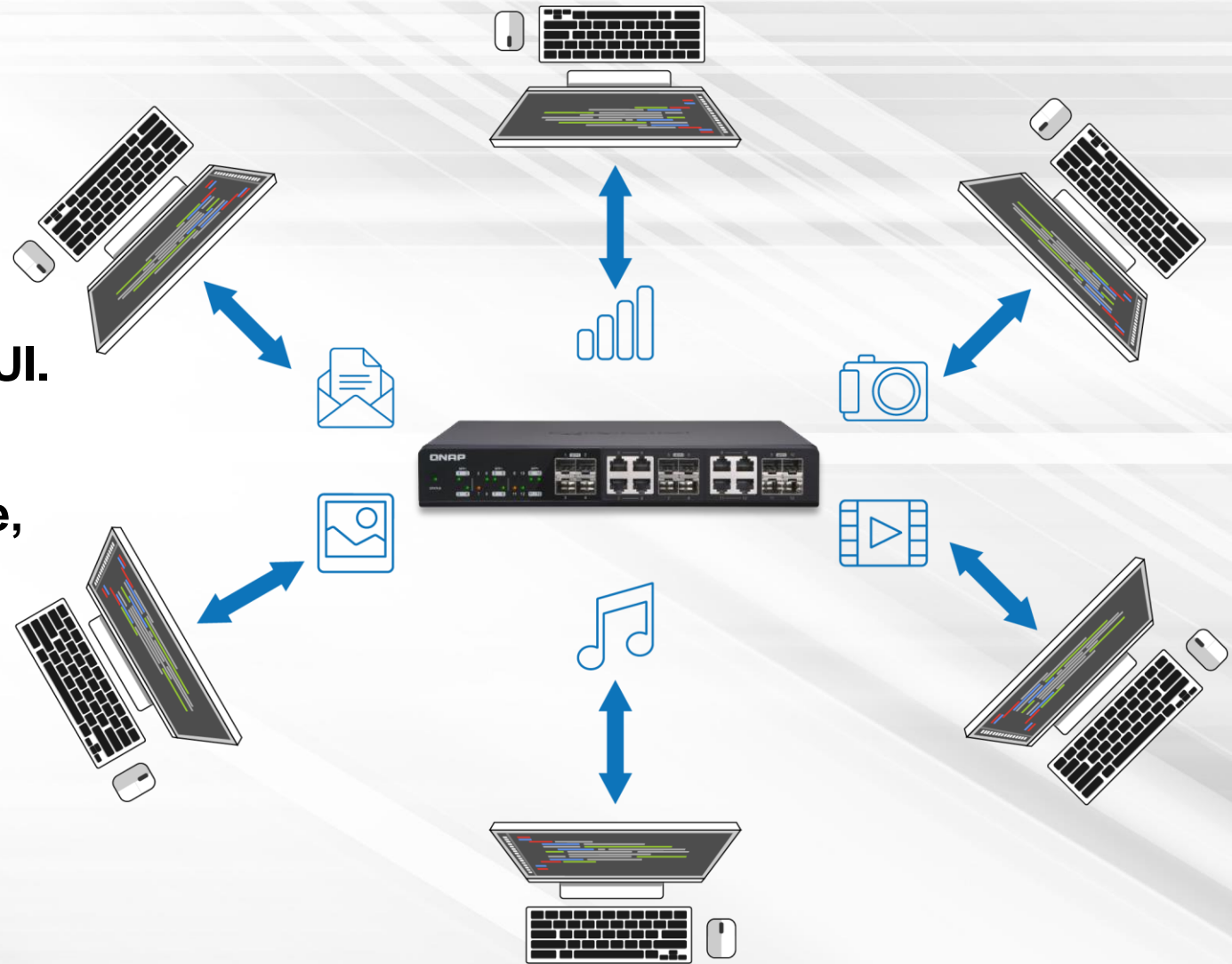


QSW-M1208-8C

Management switch give user more information



- More information can be checked on GUI.
- Don't need check cable one by one.
- Cowork with 3rd party monitor software, more easy for management.



Management switch manage network more easy and detailed



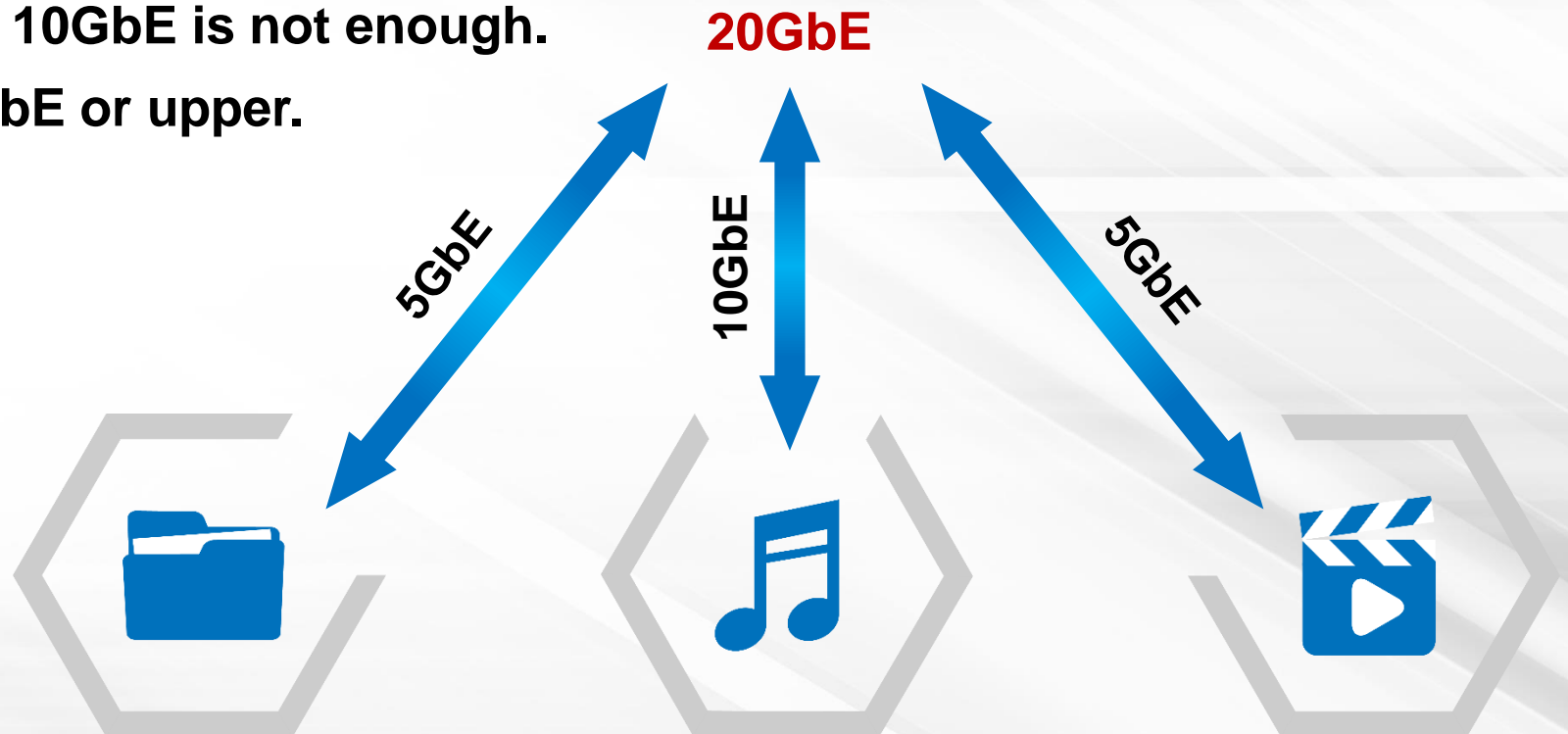
- Divide network by using VLAN, avoid security issue explore.
- Give different priority for different purpose.
- Integrate VLAN and firewall, to have more complete security and flow management.



10GbE is not enough for NAS transfer

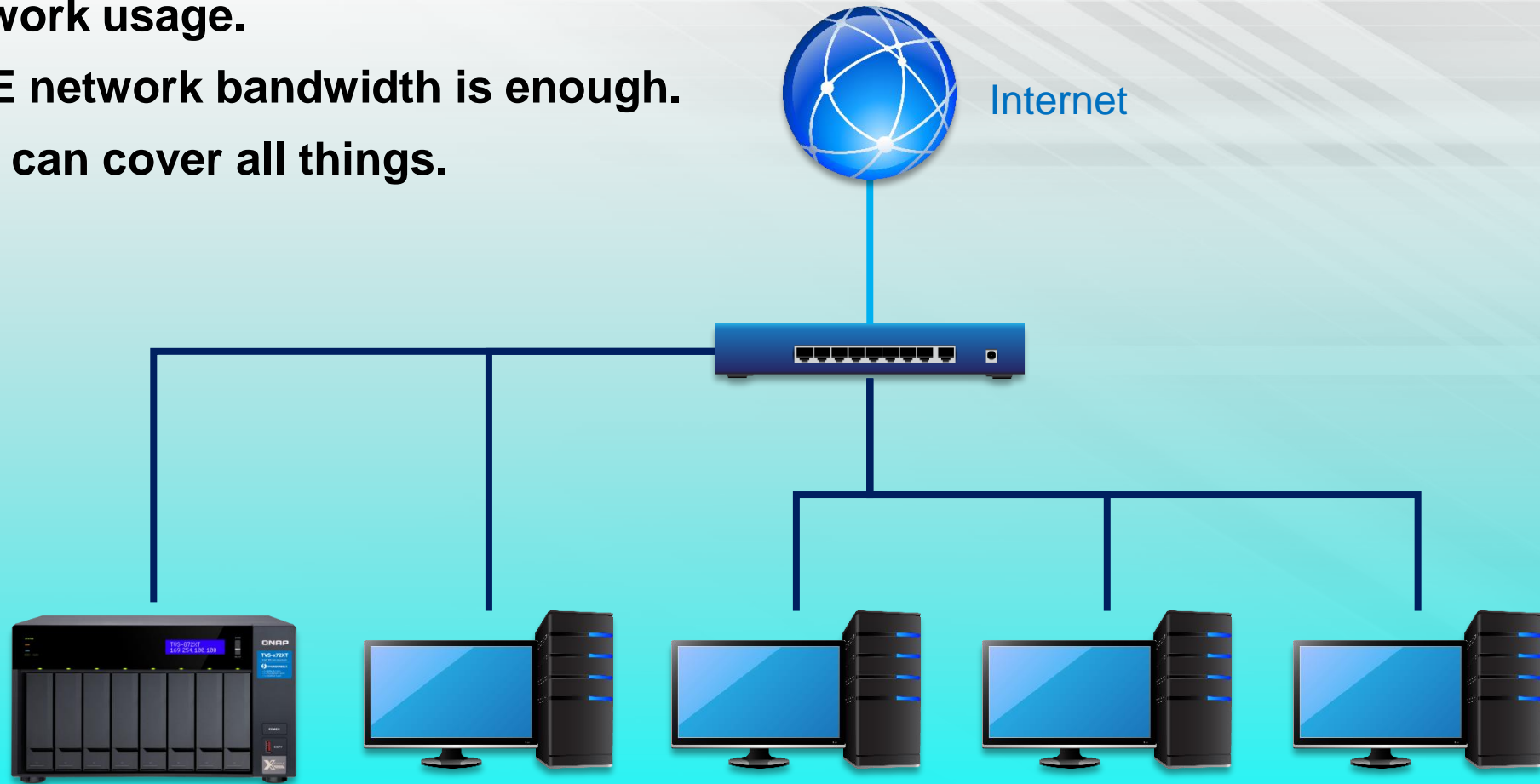


- AV files getting larger, even 10GbE is not enough.
- Need higher speed like 20GbE or upper.





- Simple network usage.
- Fully 10GbE network bandwidth is enough.
- Single NAS can cover all things.



File size getting larger



To have high quality of video & documents, file sizes can be bigger.

Galaxy S20 video file size comparison

30s sample video

- Full HD 1080p@30fps (H.264) - 52.2MB
- 4K UHD@30fps (H.264) - 138.68MB
- 8K UHD@24fps (H.265)- 302.87MB

Moreover, increasing both the framerate and video duration yielded the following results:

1m30s sample video

- Full HD 1080p@60fps (H.264) - 232.06MB
- 4K UHD@60fps (H.264) - 752.25MB
- 8K UHD@24fps (H.265) - 885.92MB



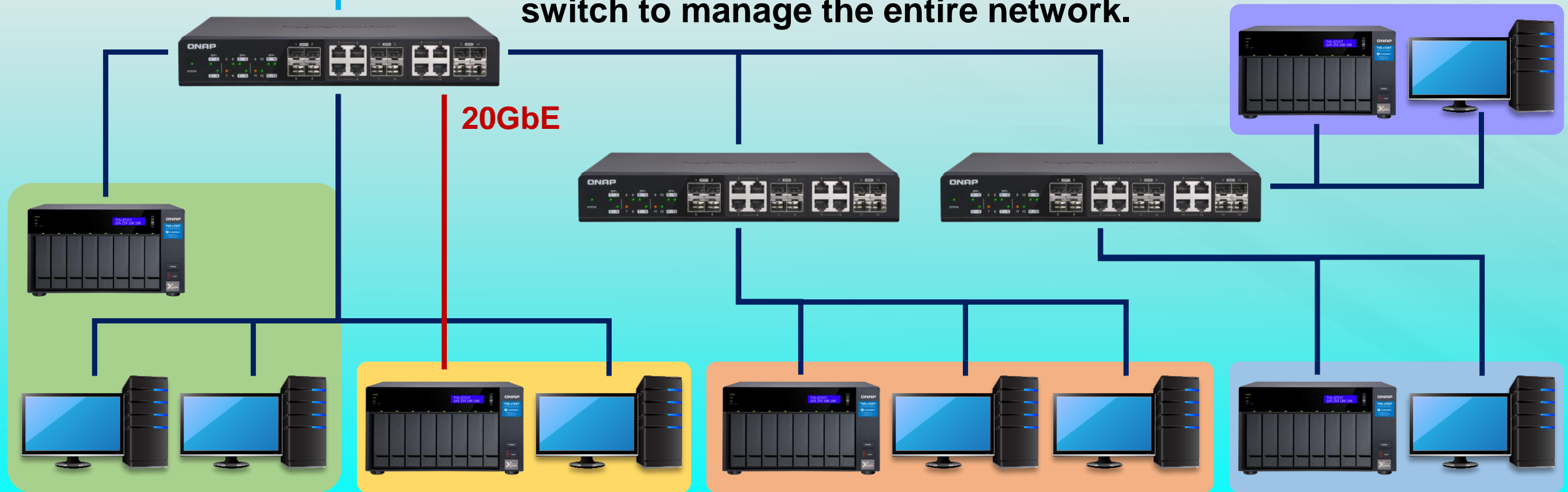
Now

Studio office



Internet

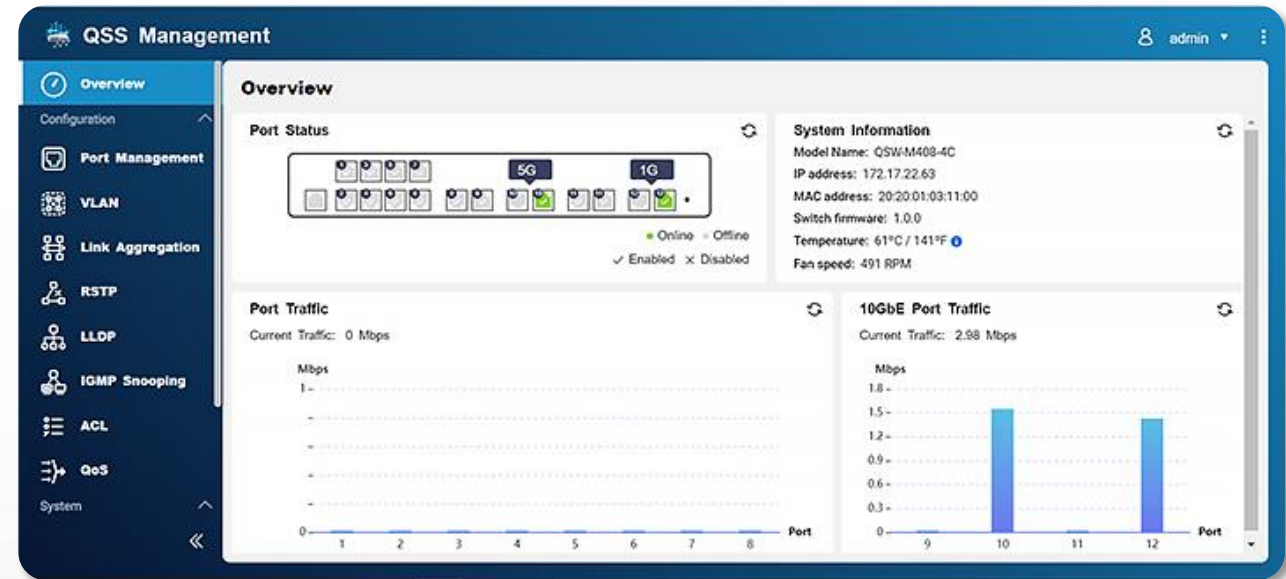
- Some NAS need more than 10GbE bandwidth.
- More than one switch.
- Separate department.
- Need management function on switch to manage the entire network.



QSW-M1208 series brings powerful network for studio production



- Fully SFP+ or SFP+/ NBASE-T, flexible with 10GbE network.
- Link aggregation (LACP) bring you to more then 20GbE network speed.
- Easy web management design.



Rich management functions



- VLAN
- Link Aggregation Group (LAG)
- Rapid Spanning Tree Protocol (RSTP)
- Link Layer Discovery Protocol (LLDP)
- IGMP snooping
- Access Control Lists (ACL)
- Quality of Service (QoS)
- Simple Network Time Protocol (SNTP)



Raise network speed with multiple network cable



- Link Aggregation (LAG) can aggregate multiple network cable into a single logical network.
- Quick and direct to have a network more than 10GbE.



Split office network into different area

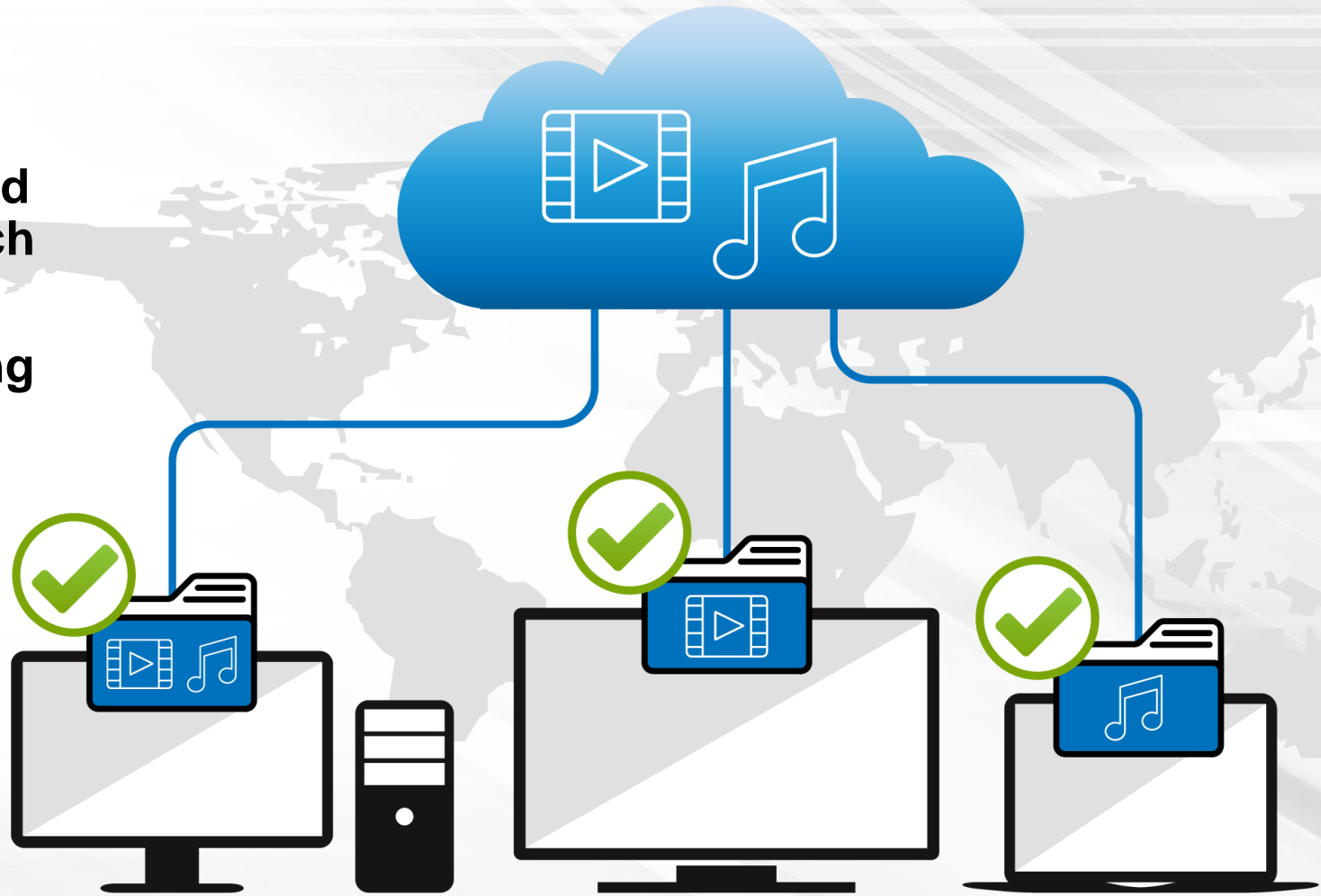
- Virtual network (VLAN) can split office network.
- Easy to manage, can set up routing to connect different networks.
- Separate employee and guest network.



Deliver streaming to dedicate device specificly



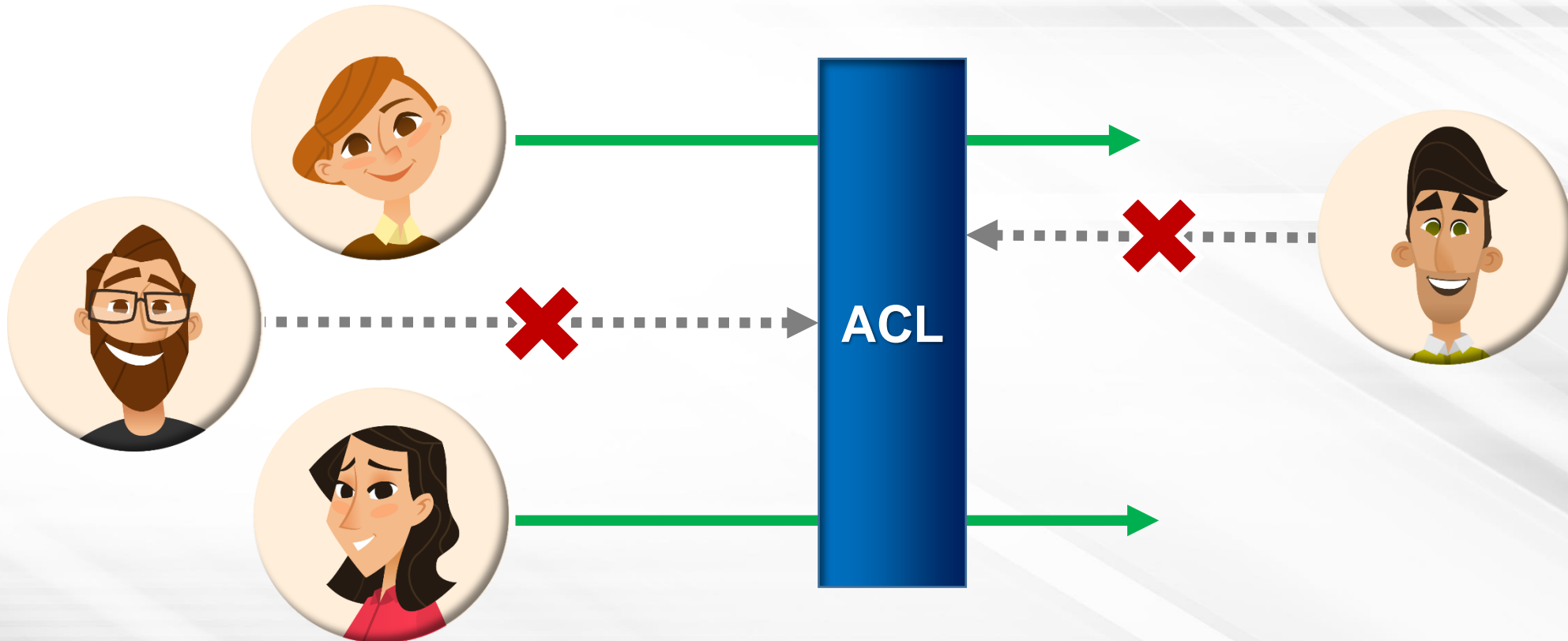
- IGMP snooping can record streaming request for each end point device.
- Avoid packet lost or wrong stream broadcast.



Easy access control



- Access Control List (ACL) can control access specifically.
- To avoid security issue.



Firmware version live check

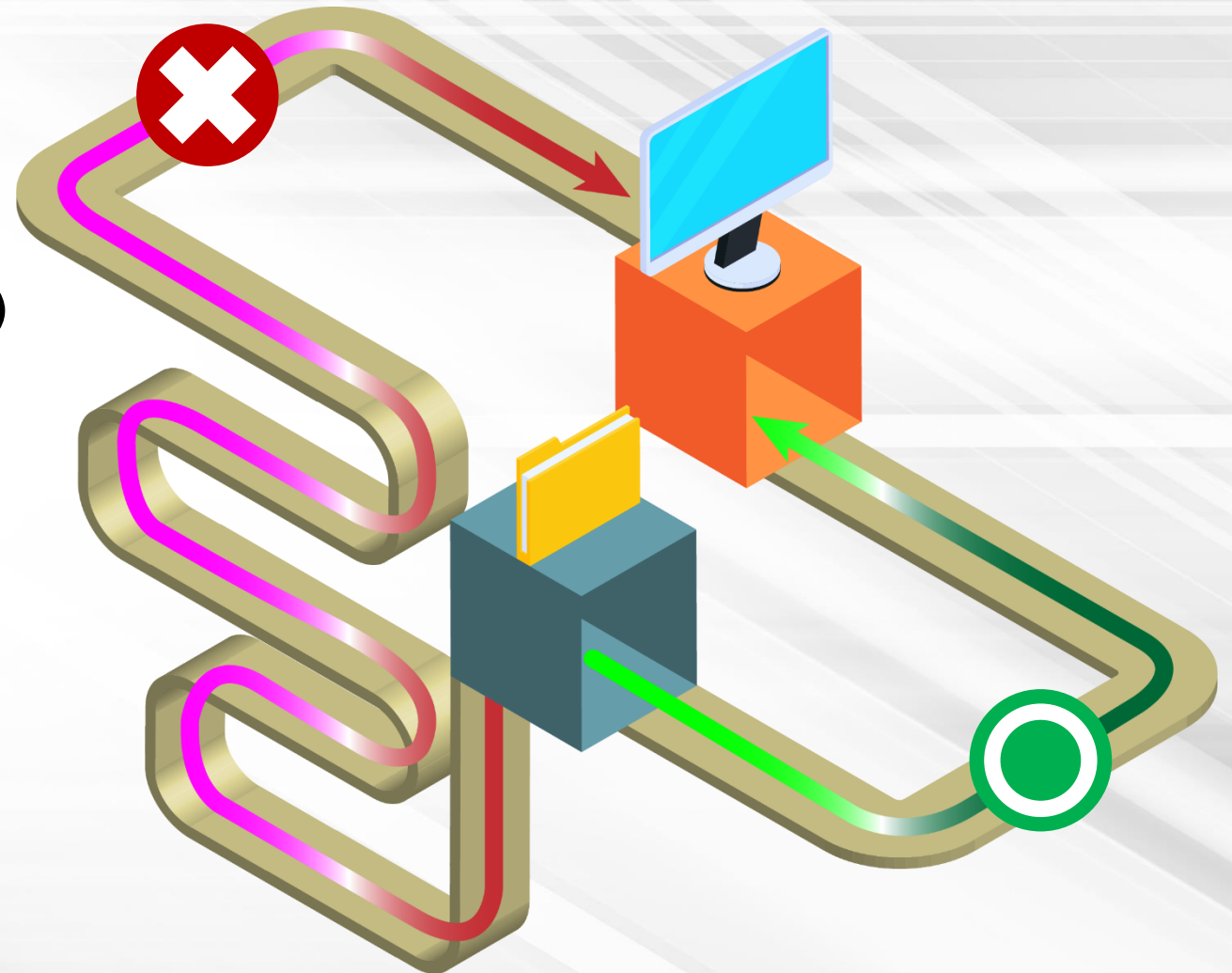


- One-click update.
- Firmware version auto detect.
- Manual update

Always looking for best routing



- Rapid Spanning Tree Protocol (RSTP) live check best networking route.
- Always using most effective route for data transfer.



QSW-M1208 have more



Ethernet flow control (IEEE 802.3x) managing packet transfer, avoid packet lost.



Link Layer Discovery Protocol (LLDP), easy to know which devices are conneted.



Energy-Efficient Ethernet (IEEE 802.3az) and fan speed control, managing power consumption.



QNAP

Perfectly integrated with QNAP 10GbE products



QSW-M1204-4C



QSW-M804-4C



QSW-M1208-8C

12 port 10GbE combo port give flexiabile deployed



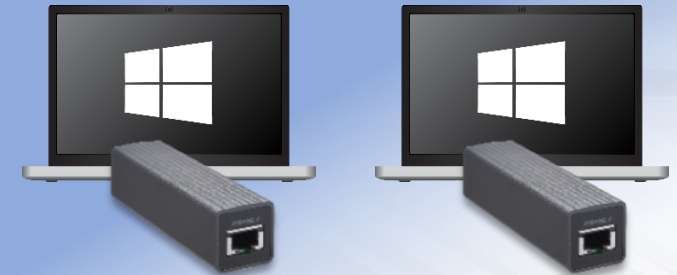
Embedded or extension
10G/5G/2.5G NAS



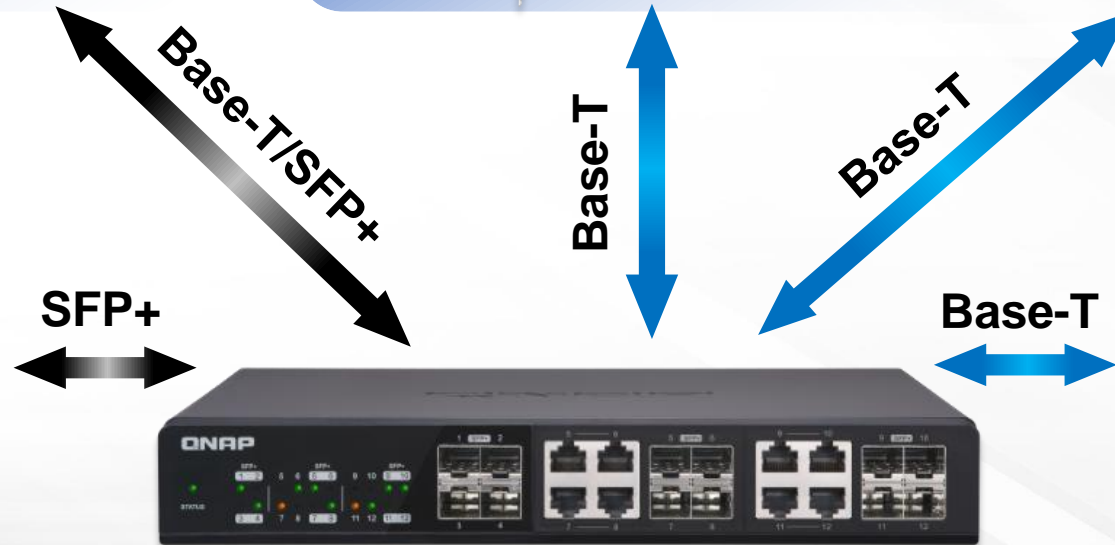
PC upgrade 2.5G/5G/10G



Laptop upgrade 5G



High speed network
connect to
NAS/Server



MacBook upgrade 10G



Tablet NAS with embedded 2.5/5/10GbE



With **10GbE BASE-T**

With **10GbE SFP+**



TVS-x72XT Family



TS-x83PX Family



TS-431X3
10GbE+2.5GbE



TS-431KX

With **5GbE BASE-T**

With **2.5GbE BASE-T**



TVS-x72N Family



TS-hx86 Family



TS-x31P3 Family



TS-x53D Family

Rack mount network NAS with embedded 2.5/5/10GbE



With **10GbE BASE-T & SFP+**

QuTS hero edition
TS-h1283XU-RP



TS-h1283XU-RP

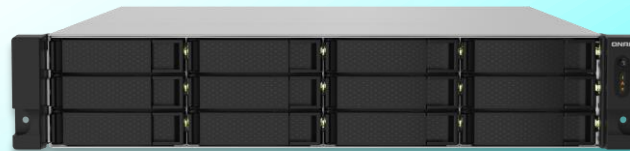
QuTS hero edition
TS-h1277XU-RP



TS-h977XU-RP
TS-h1277XU-RP



GM-1002/1002



TVS-x72XU

With **2.5GbE BASE-T**



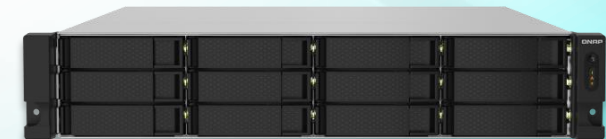
TS-451DeU



TS-x73AU



TS-x53DU



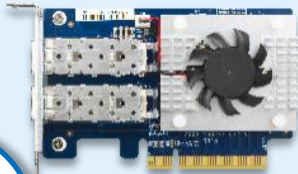
TS-x32PXU
+ 2x 10GbE SFP+

Network extension : rich PCIe network extension card



10GbE series

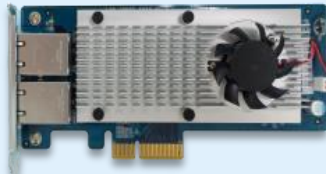
QXG-10G2SF-CX4



2 x SFP+



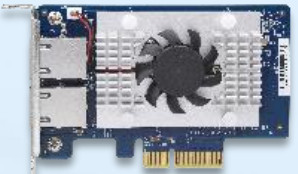
LAN-10G2T-X550



2 x RJ45



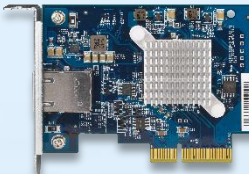
QXG-10G2T-107



2 x RJ45



QXG-10G1T



2 x RJ45

5GbE series

QXG-5G Family



1 x RJ45



2 x RJ45



4 x RJ45



2.5GbE series

QXG-5G Family



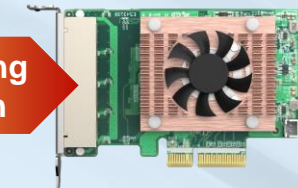
1 x RJ45

Coming soon



2 x RJ45

Coming soon



4 x RJ45



Network extention : hand carry adaptor



QNA-UC5G1T



USB 3.2 Gen 1

- RJ45 NBASE-T
- 4 speed: 5G/2.5G/1G/100M

USB Plug and play upgrade your PC/Laptop to 10GbE high speed network

<https://www.qnap.com/en/product/qna-uc5g1t>

QNA-T310G1T



Thunderbolt 3

- 10GbE NBASE-T port
- 5 speed: 10G/5G/2.5G/1G/100M

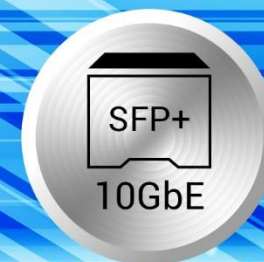
USB Plug and play upgrade your PC/Laptop to 10GbE high speed network, through Thunderbolt

<https://www.qnap.com/en/product/qna-tb-10gbe>

QNAP

QSW-M1208 series

Your Best Choice!



© 2020 Copyright is owned by QNAP Technology Co., Ltd. QNAP Technology reserves all rights. A trademark or mark used or registered by QNAP Technology Co., Ltd. The products and company names mentioned in the file may be trademarks owned by other companies.



QSW-M1204-4C



QSW-M804-4C



QSW-M1208-8C